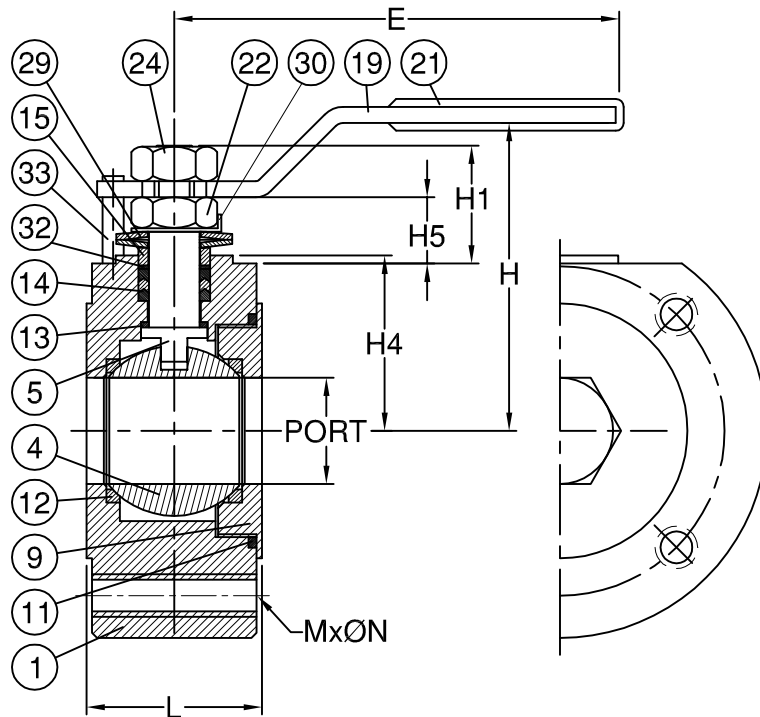
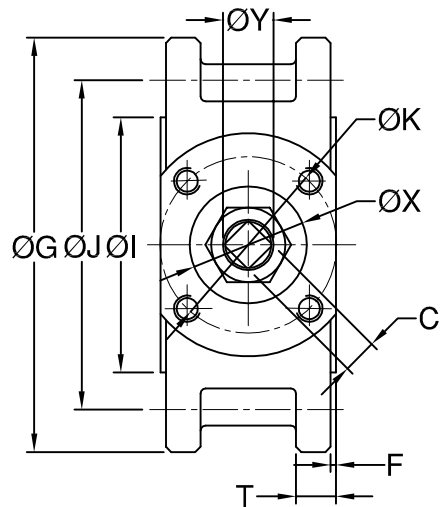


**MODEL: D057**

**MATERIAL LIST**

NO.	PART NAME	MATERIAL
1	BODY	1.4408 / EN1503-1
4	BALL	ASTM A351 Gr.CF8M
5	STEM	SS316
9	INSERT CAP	1.4408 / EN1503-1
11	BODY SEAL	PTFE
12	SEAT	RTFE
13	THRUST WASHER	PTFE
14	STEM PACKING	PTFE
15	GLAND	SS304
19	HANDLE	SS304
21	HANDLE COVER	PLASTIC
22	STEM NUT	SS304
23	HANDLE WASHER	SS304
29	BELLEVILLE WASHER	SS301
30	TAB WASHER	SS304
32	PACKING FOLLOWER	PTFE+25%G.F.
33	STOP PIN	SS304



**DIMENSIONS**

unit:mm

SIZE	PORT	L	E	H	H1	H4	H5	C	ØX
DN15	1/2"	15	35	116	70	10.5	32	10.0	9.0
DN20	3/4"	20	40	116	74	8.0	38	8.5	9.0
DN25	1"	25	44	165	75	7.2	42	9.0	9.0

SIZE	ØY	ØG	ØJ	ØI	T	F	MxØN	ØK
DN15	1/2"	9.6	95.0	65.0	45.0	7.0	2.0	4x1/2"-13UNC
DN20	3/4"	9.6	105.0	75.0	58.0	7.0	2.0	4x1/2"-13UNC
DN25	1"	9.6	115.0	85.0	65.0	7.5	2.0	4x1/2"-13UNC

**MODEL: D057**

**MATERIAL LIST**

NO.	PART NAME	MATERIAL
1	BODY	1.4408 / EN1503-1
4	BALL	ASTM A351 Gr.CF8M
5	STEM	SS316
9	INSERT CAP	1.4408 / EN1503-1
11	BODY SEAL	PTFE
12	SEAT	RTFE
13	THRUST WASHER	PTFE
14	STEM PACKING	PTFE
15	GLAND	SS304
19	HANDLE	SS304
19-1	HANDLE	STEEL
20	SET SCREW	SS304
21	HANDLE COVER	PLASTIC
21-1	HANDLE SLEEVE	PLASTIC
22	STEM NUT	SS304
24	HANDLE NUT	SS304
28	STOP PLATE	SS304
29	BELLEVILLE WASHER	SS301
30	TAB WASHER	SS304
32	PACKING FOLLOWER	PTFE+25%G.F.
33	STOP PIN	SS304
50	ADAPTER	ASTM A351 Gr.CF8

**DIMENSIONS**

unit:mm

SIZE	PORT	L	E	H	H1	H4	H5	C	ØX	ØY	ØG	ØJ	ØI	T	F	MxØN	ØK	
DN32	1-1/4"	32	54	165	87	26.5	50	15.6	8.0	32	11.2	140	100	78	17.0	2	4xM16	42
DN40	1-1/2"	38	62	193	90	26.0	54	15.6	8.0	35	11.2	150	110	88	19.0	2	4xM16	50
DN50	2"	50	80	193	99	25.0	62	14.6	8.0	35	11.2	165	125	102	19.5	2	4xM16	50
DN65	2-1/2"	64	101	235	141	31.0	82	17.8	9.5	53	16.0	185	145	122	17.0	2	4xM16	70
DN80	3"	76	118	235	150	31.5	91	18.8	9.5	53	16.0	200	160	138	20.0	3	8xM16	70
DN100	4"	96	150	266	172	51.0	107	28.0	17.0	55	28.0	220	180	158	21.0	3	8xM16	102
DN125	5"	118	179	400	205	50.0	117	31.0	17.0	55	28.0	250	210	188	22.0	3	8xM16	102
DN150	6"	135	202	600	220	50.0	130	31.0	17.0	60	28.0	285	240	212	22.0	3	8xM20	125

