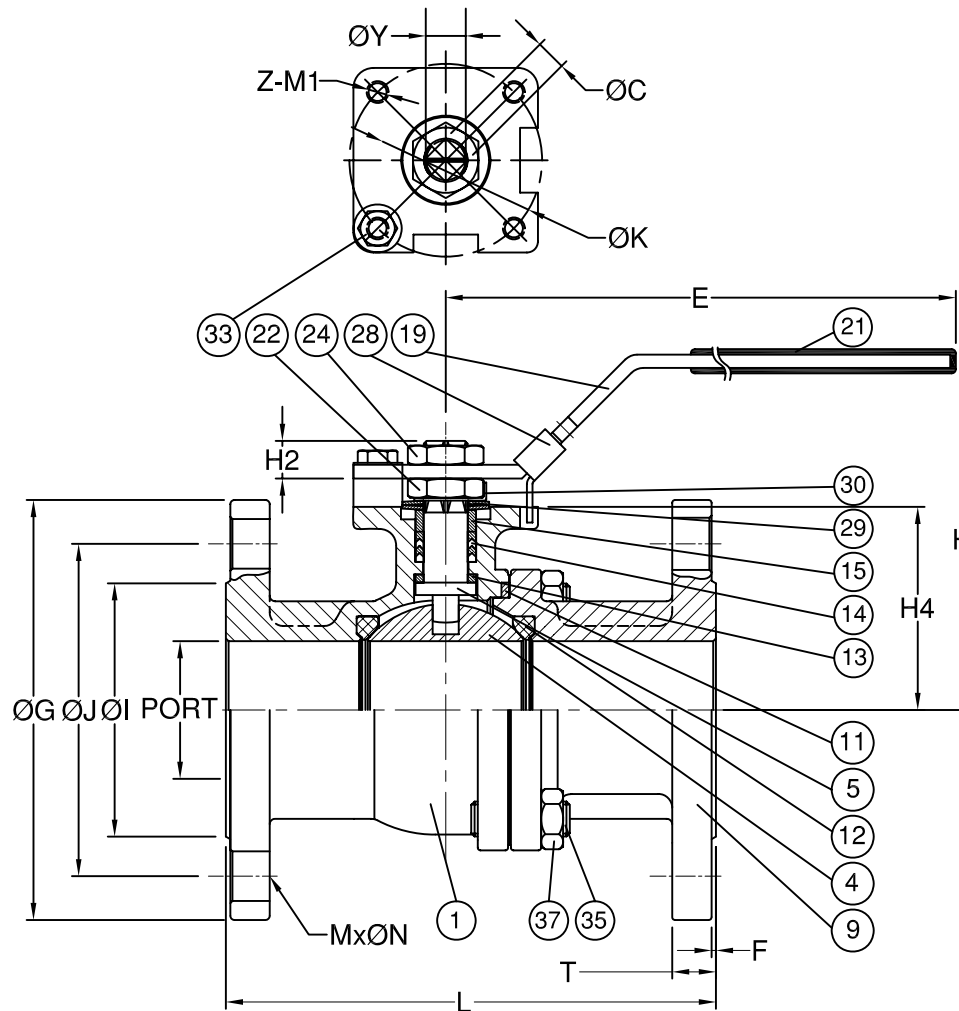


Fig No: D027 - 1

MATERIALS LIST

NO.	PART NAME	MATERIAL
1	BODY	1.4408 / EN1503-1
4	BALL	CF8M / EN1503-2
5	STEM	SS316
9	END CAP	1.4408 / EN1503-1
11	BODY SEAL	PTFE.
12	SEAT	RTFE.
13	THRUST WASHER	PTFE.
14	STEM PACKING	PTFE.
15	GLAND BUSH	SS304
19	HANDLE	SS304
21	HANDLE COVER	PLASTIC
22	STEM NUT	SS304
24	HANDLE NUT	SS304
28	LOCKING PAD	SS304
29	BELLEVILLE WASHER	SS301
30	TAB WASHER	SS304
33	STOP PIN	SS304
35	BODY BOLT	ASTM A193 Gr.B8
37	BOLT NUT	ASTM A193 Gr.8

FLANGE DIMENSION: EN 1092-1
FACE TO FACE: DIN 3202



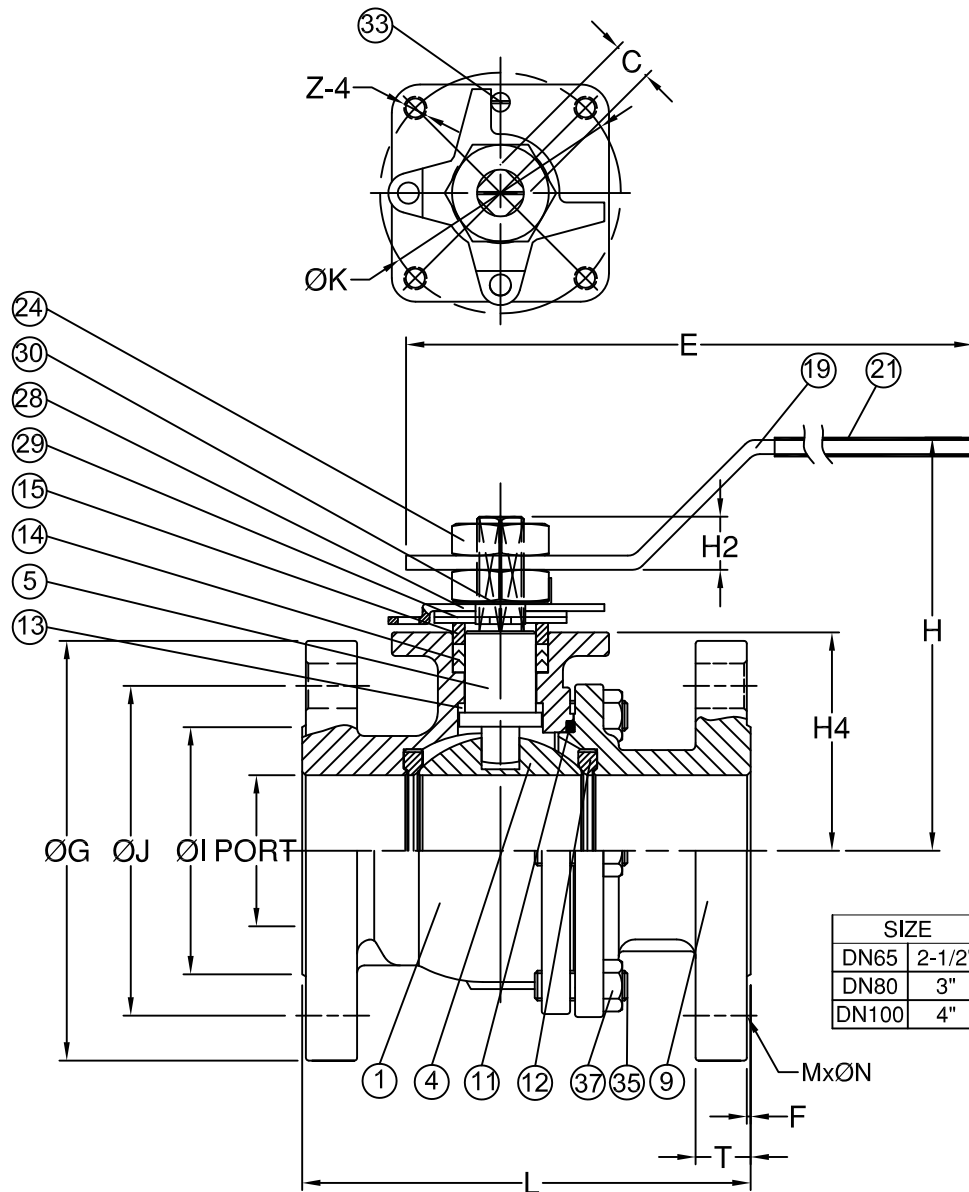
DIMENSIONS

unit:mm

SIZE	PORT	L	E	H	H2	H4	C	ØY	ØG	ØJ	ØI	T	F	M	ØN	ØK	Z	M1	
DN15	1/2"	15.0	115.0	132.0	80.0	8.5	38.5	9.0	11.2	95.0	65.0	45.0	16.0	2.0	4	14.0	42.0	M5*0.8P	4
DN20	3/4"	20.0	120.0	132.0	84.5	8.5	42.5	9.0	11.2	105.0	75.0	58.0	18.0	2.0	4	14.0	42.0	M5*0.8P	4
DN25	1"	25.0	125.0	166.0	102.0	12.0	52.0	11.0	14.3	115.0	85.0	68.0	18.0	2.0	4	14.0	50.0	M6*1.0P	4
DN32	1 1/4"	32.0	130.0	166.0	105.0	12.0	56.0	11.0	14.3	140.0	100.0	78.0	18.0	2.0	4	18.0	50.0	M6*1.0P	4
DN40	1 1/2"	38.0	140.0	198.0	125.0	12.0	65.3	14.0	18.0	150.0	110.0	88.0	18.0	2.0	4	18.0	70.0	M8*1.25P	4
DN50	2"	50.0	150.0	198.0	132.0	12.0	73.8	14.0	18.0	165.0	125.0	102.0	20.0	2.0	4	18.0	70.0	M8*1.25P	4

CE

Fig No: D027 - 2



MATERIALS LIST

NO.	PART NAME	MATERIAL
1	BODY	1.4408 / EN 1503-1
4	BALL	CF8M / EN 1503-2
5	STEM	SS316
9	END CAP	1.4408 / EN 1503-1
11	BODY SEAL	PTFE.
12	SEAT	PTFE.
13	THRUST WASHER	PTFE.
14	STEM PACKING	PTFE.
15	GLAND BUSH	SS304
19	HANDLE	SS304
21	HANDLE COVER	PLASTIC
24	HANDLE NUT	SS304
28	STOP PLATE	SS304
29	BELLEVILLE WASHER	SS301
30	TAB WASHER	SS304
33	STOP PIN	SS304
35	BODY BOLT	ASTM A193 Gr.B8
37	BOLT NUT	ASTM A194 Gr.8

FLANG DIMENSION: EN 1092-1 RF
FACE TO FACE: DIN 3202

DIMENSIONS

SIZE	PORT	unit:mm															
		L	E	H	H2	H4	C	ØG	ØJ	ØI	T	F	M	ØN	ØK	Z	
DN65	2-1/2"	64.0	170.0	244.5	176.8	23.0	92.5	17.0	185.0	145.0	122.0	18.0	2.0	4	18.0	102.0	M10*1.5P
DN80	3"	76.0	180.0	244.5	186.0	23.0	101.7	17.0	200.0	160.0	138.0	20.0	2.0	8	18.0	102.0	M10*1.5P
DN100	4"	100.0	190.0	265.5	200.9	23.0	119.0	17.0	220.0	180.0	158.0	20.0	2.0	8	18.0	102.0	M10*1.5P

CE

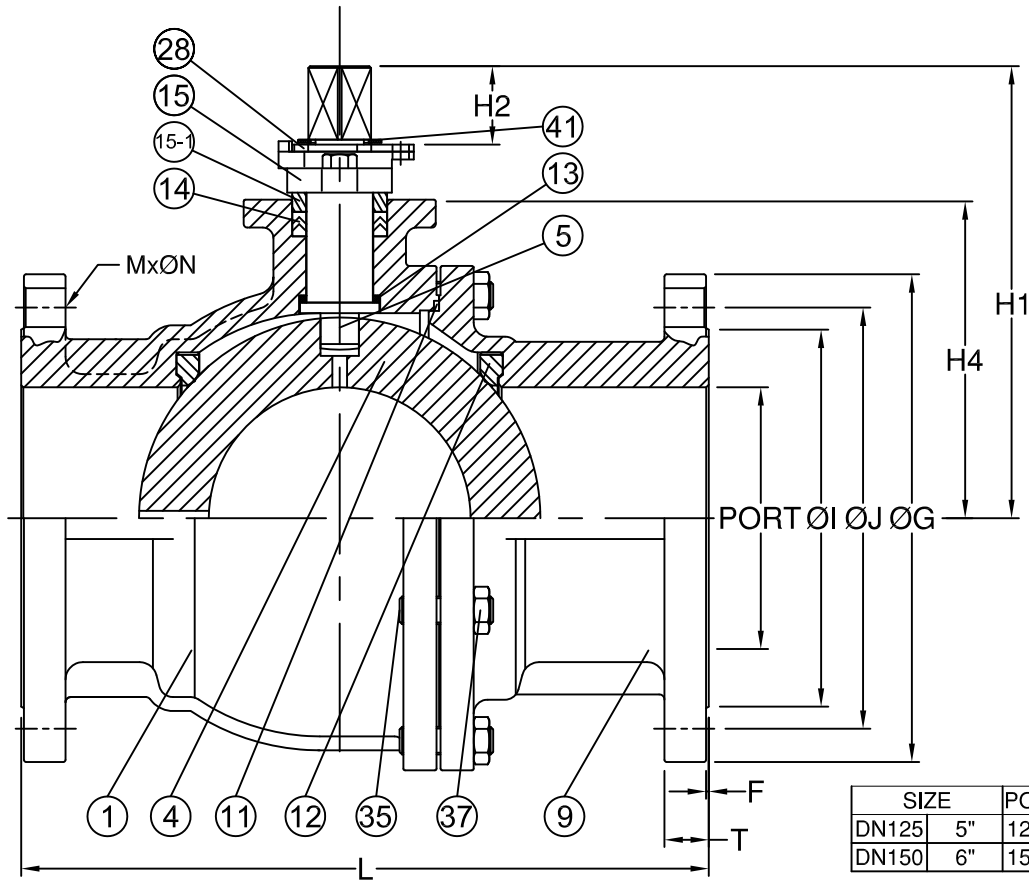
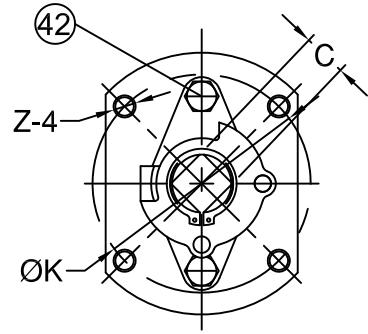


Fig No: D027 - 3

MATERIALS LIST

NO.	PART NAME	MATERIAL
1	BODY	1.4408 / EN 1503-1
4	BALL	CF8M / EN 1503-2
5	STEM	SS316
9	END CAP	1.4408 / EN 1503-1
11	BODY SEAL	PTFE.
12	SEAT	RTFE.(15%G.F.)
13	THRUST WASHER	PTFE.
14	STEM PACKING	PTFE.
15	GLAND	SS301
15-1	GLAND BUSH	SS304
28	STOP PLATE	SS304
35	BODY BOLT	ASTM A193 Gr.B8
37	BOLT NUT	ASTM A194 Gr.8
41	SNAP RING	SS304
42	GLAND BOLT	SS304

FLANG DIMENSION: EN 1092-1 RF
FACE TO FACE: DIN 3202

DIMENSIONS

unit:mm

SIZE	PORT	L	H1	H2	H4	C	ØG	ØJ	ØI	T	F	M	ØN	ØK	Z	
DN125	5"	125.0	325.0	223.0	35.0	156.6	27.0	250.0	210.0	188.0	22.0	2.0	8	18.0	125.0	M12*1.75P
DN150	6"	150.0	350.0	249.0	35.0	182.5	27.0	285.0	240.0	212.0	22.0	2.0	8	18.0	125.0	M12*1.75P