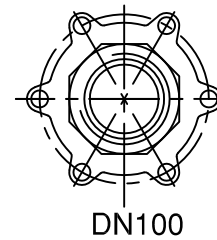
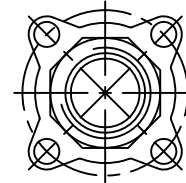
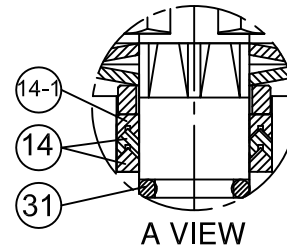


# Fig No: D358A

## MATERIAL LIST

NO.	PART NAME	MATERIAL
1	BODY	CF8M/EN1503-2
4	BALL	CF8M/EN1503-2
5	STEM	SS316
9	END CAP	CF8M/EN1503-2
11	BODY SEAL	PTFE.
12	SEAT	RTFE.
13	THRUST WASHER	RTFE.
14	STEM PACKING	PTFE.
14-1	STEM PACKING	PTFE.+25%G.F.
15	GLAND BUSH	SS304
19	HANDLE	SS304
21	HANDLE COVER	PLASTIC
22	STEM NUT	SS304
23	STEM WASHER	SS304
23-1	WASHER	SS304
28	LOCKING DEVICE	SS304
29	BELLEVILLE WASHER	SS301
30	TAB WASHER	SS304
31	STEM O-RING	VITON
33	STOP PIN	SS304
34	PIN NUT	SS304
35	BODY BOLT	SS304
36	BOLT WASHER	SS304
37	BOLT NUT	SS304



## DIMENSIONS

unit:mm

SIZE	PORT	L	E	H	H1	H4	C	ØK	ØK1	BW	T	
DN8	1/4"	11.6	70.0	139.0	77.0	6.1	42.1	9.0	42.0	36.0	16.2	1.6
DN10	3/8"	12.7	70.0	139.0	77.0	6.1	42.1	9.0	42.0	36.0	17.5	1.6
DN15	1/2"	15.0	75.0	139.0	77.0	6.1	42.1	9.0	42.0	36.0	22.7	1.6
DN20	3/4"	20.0	90.0	139.0	83.0	6.6	48.0	9.0	42.0	36.0	27.8	1.6
DN25	1"	25.0	100.0	165.0	96.0	10.9	56.6	11.0	50.0	42.0	34.0	1.6
DN32	1-1/4"	32.0	110.0	165.0	100.0	10.9	60.9	11.0	50.0	42.0	42.7	1.6
DN40	1-1/2"	38.0	125.0	215.0	127.0	13.9	77.5	14.0	70.0	50.0	48.6	1.6
DN50	2"	50.0	150.0	215.0	135.0	13.9	85.2	14.0	70.0	50.0	60.5	1.6
DN65	2-1/2"	65.0	190.0	263.0	168.0	16.8	108.7	17.0	102.0	70.0	76.3	2.0
DN80	3"	80.0	220.0	313.0	176.0	17.8	117.7	17.0	102.0	70.0	90.0	2.0
DN100	4"	100.0	270.0	344.0	191.0	16.8	132.55	17.0	102.0	70.0	116.0	3.5

